

Automatic rack-type dishwasher, capacity up to 150 racks, 2.700 plates or 5.400 glasses per hour

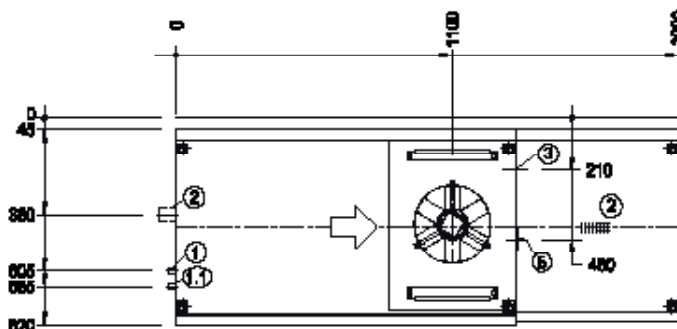
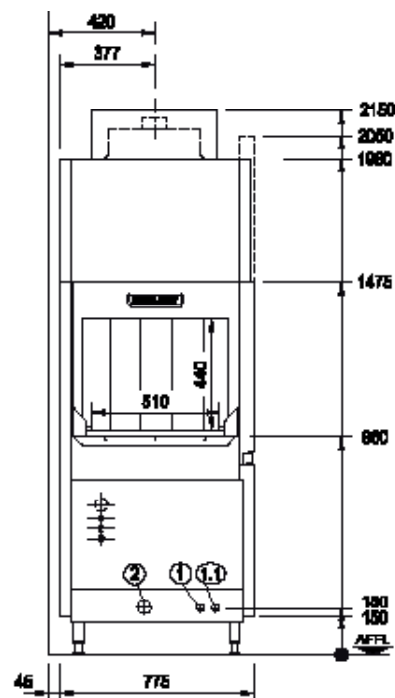
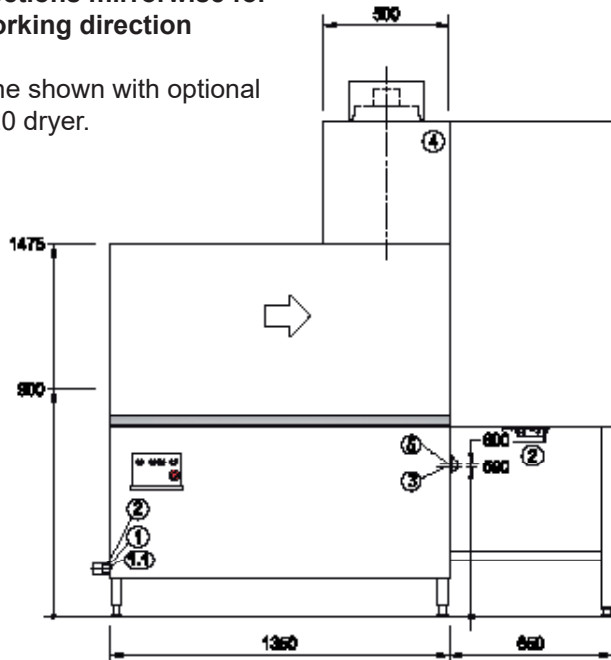


Product Advantages:

- Single rinse system - 180 l/h - (1.3 / 0.9 litres per rack)
- Stainless steel tank cover strainer system
- Optimum hygiene safety - deep drawn tank
- Two speed - 100 / 150 racks / hr
- Double skin insulated full width spring assisted door
- Optional heat recovery for lower operating costs
- Stainless steel 1.5kW wash pump
- Including main switch and emergency stop
- Drop-In wash arms with no end caps
- Colour-coded cleaning assistance

Connections mirrorwise for R/L working direction

Machine shown with optional D-90-20 dryer.



| | | |
|-----|---------------------------------|--|
| 1 | Warm water connection (filling) | R 3/4" 0 - 3°d, (1,4mmol/l); 55-65 degrees Celcius |
| 1.1 | For machine operation | Warm water connection for machine without heat recovery Cold & Warm water connection for machine with heat recovery |
| | | R 3/4" 0 - 3°d, (1,4mmol/l); max. 180 l/h; demineralized water blended to have appr. 80 µs/cm |
| 2 | Drain | DN 50 |
| 3 | Power supply | 415/50/3 N+E Without dryer - 26.9kW / With dryer (D90) - 30.5W |
| 4 | Exhaust | approx. 280m³/hr |
| 5 | Main switch | |
| | Table height | 900mm |
| | Machine height +/- | 25mm feet adjustable |