

Automatic rack type dishwasher, capacity up to 150 racks, 2.700 plates or 5.400 glasses per hour.

Product Advantages:

- INFOTRONIC 4.3 full colour display control
- 1.8kW stainless steel main wash pump
- C20 heat recovery system to minimise energy consumption and operating costs
- Low 150L per hour triple rinse with rinse pump to guarantee rinse volume
- Autotimer for efficient time saving operation
- 100% hygiene deep drawn stainless steel wash tank with stainless steel tank strainer system
- Door insulation included for improved work environment & lower operating costs
- Efficient 3-speed operation (80/95/150 racks/hr)
- Includes emergency stop and main switch
- Wash-rinse actuator to ensure economic operation
- New washarms without end caps

Connections mirrorwise for R/L working direction R/L

Machine shown with optional CDS-90-15 dryer.

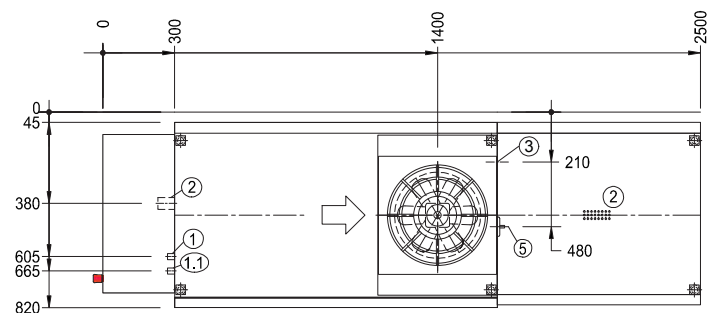
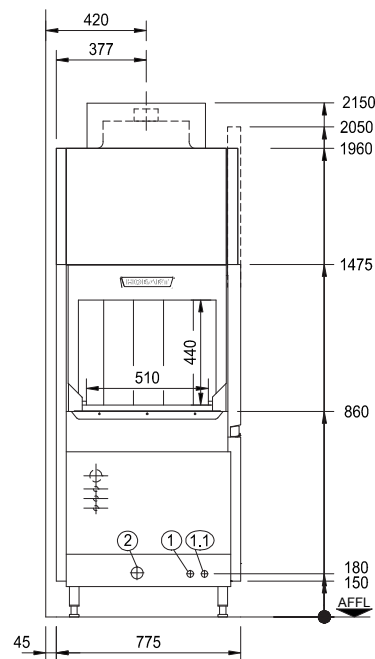
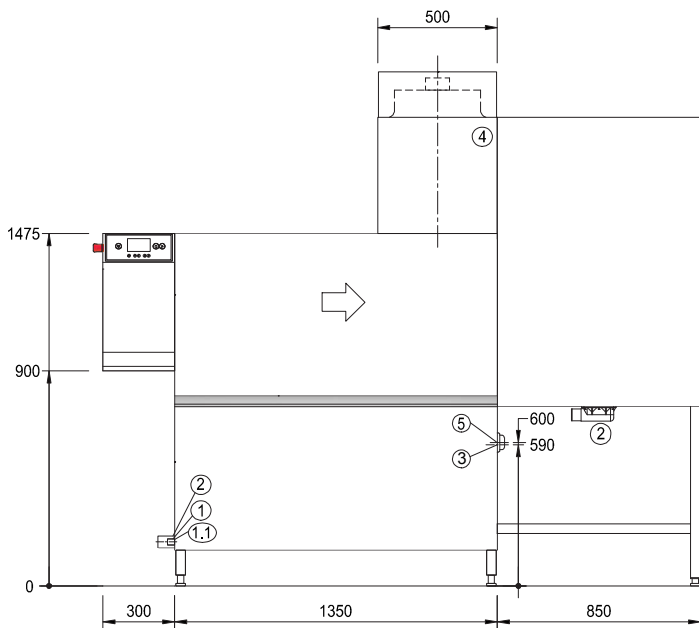


Table height 900mm
Machine height +/- 25mm feet adjustable

| | | |
|-----|---|--|
| 1 | fresh water connection, soft | R 3/4" 0 - 3°d, (0,5mmol/l); max. 150-170 l/h, demineralized water blended to have appr. 80 µs/cm |
| 1.1 | hot water connection for separate tank fill (option) | R 3/4" 0 - 3°d; (1,4mmol/l) |
| 2 | drain | DN 50 |
| 3 | power supply | without dryer - 26.0kW with dryer - 31.1kW |
| 4 | Ventilation / vent. condition | appr. 280 m³/h, 25-28°C, 2,7 g/m³ humidity |
| 5 | main switch | |